

Introduction to Archaeology

Fall 2024
Lecture 5 (9/17)



Week 3

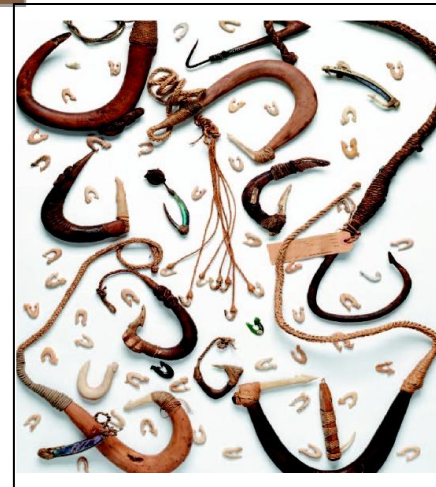
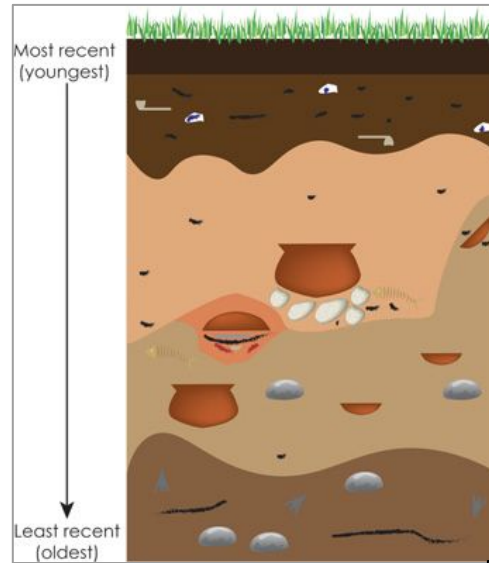
Archaeology's Roots

- General History
 - *Archaeology as History* (Int, 1, 2)
 - *Ladies of the Field* (Intro)
 - Trowelblazers Website
 - See [Resources](#) on website!
 - Harriet Boyd-Hawes & Victorian Archaeology
-

Archaeology as History

Telling Stories about Places (Ch 1)
& Things (Ch 2)

[see also [Lecture 4, PDF](#)]



Terminology & Themes

- Various *scales* of analysis
- Diverse sub-fields
- Survey: Finding Sites [Week 5]
- Excavation: Investigating Sites [Week 5]



<https://scholar.harvard.edu/jasonur/pages/erbil>

Investigating Sites (**Excavation**)

- Trenches, Open area excavations
- Shovel test pits & test pits
- *Sondages* (trial trench, stratigraphy)
- Levels- arbitrary vs. stratigraphic
- Stratigraphic layers, *In situ* vs. inverted
- Vertical profile or section
- Law of superposition
- Context & association
- Site formation processes (natural, cultural)
- Taphonomy
- Harris Matrix (deposits, cuts, fills)
- Record keeping (forms, small finds, features)

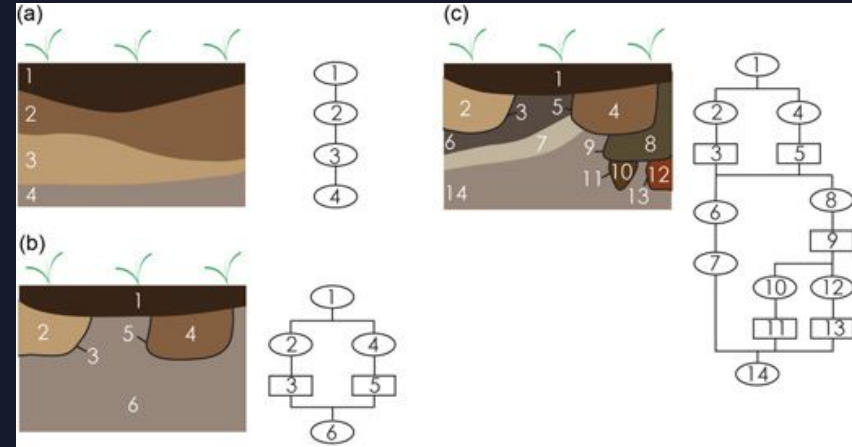


Figure 4 Composing a Harris matrix from archaeological stratigraphy:

(a) simple matrix showing four layers deposited in succession;

(b) a matrix in which two pits are cut into deposit 6;

(c) a more complex matrix that shows multiple intercutting pits and successive layers of deposits (redrawn after Bibby 1993: fig. 7).

Documenting Sites & Landscapes

3D to 2D

- Plan views
- Section views
- Planometric drawings

Technologies used?

- Drawings
- Photography
- Photogrammetry (3D)
- Geographical Information Systems (GIS)



<https://www.harappa.com/blog/indus-industry-binjor-rajasthan>

Documenting Sites & Landscapes

3D to 2D

- Plan views
- Section views
- Planometric drawings

Technologies used?

- Drawings
- Photography
- Photogrammetry (3D)
- Geographical Information Systems (GIS)



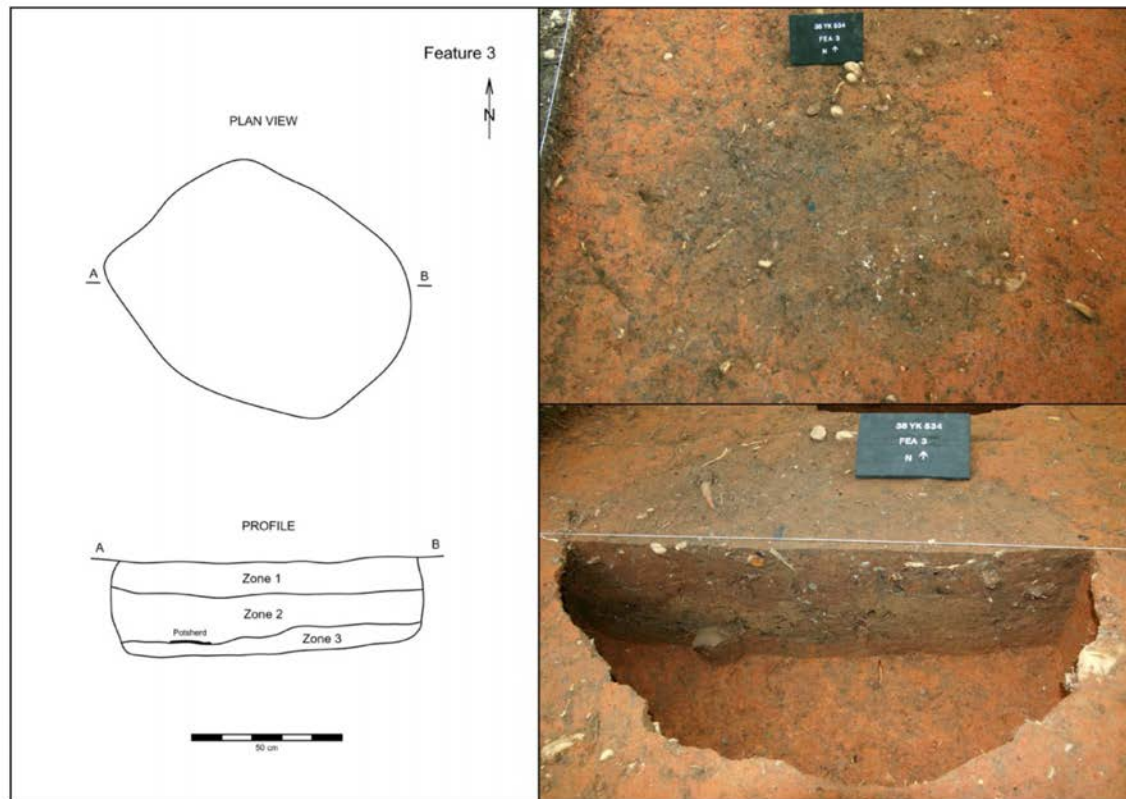


Figure 5.2. Flat-based storage pit (Feature 3) plan view and profile drawings, and excavation photographs: top of feature (top, view to north) and fill profile with south half excavated (bottom, view to north).

Studying Things (**Analysis**)

Arti/efacts (portable cultural objects)

- Style
- Function
- Technology
- Dating
- Meaning

Chronologies: Time (& Space)

- Typologies (or typo-chronologies)
 - Formal & Functional
 - Whose typologies? Interpretation?



Ceramics

- Morphology
- Function
- Style
- Clay sourcing
- Residue analysis



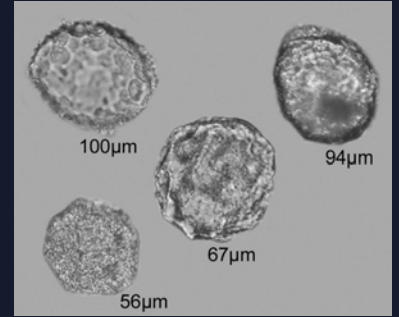
Lithics (Flaked Stone & Ground Stone)

- Morphology
- Technology
- Material
- Function
- Debitage analysis
- Use-wear analysis



Botanical & Faunal Remains

- Domestication
- Subsistence strategies
- Past environments
- Seasonality
- Social Identity
- “Other” uses
 - Medicinal, tools



Shell



Chavín music



<https://archaeology.org/issues/may-june-2021/artif-acts/artifact-france-magdalenian-shell-instrument/>

Great Bend shell beads

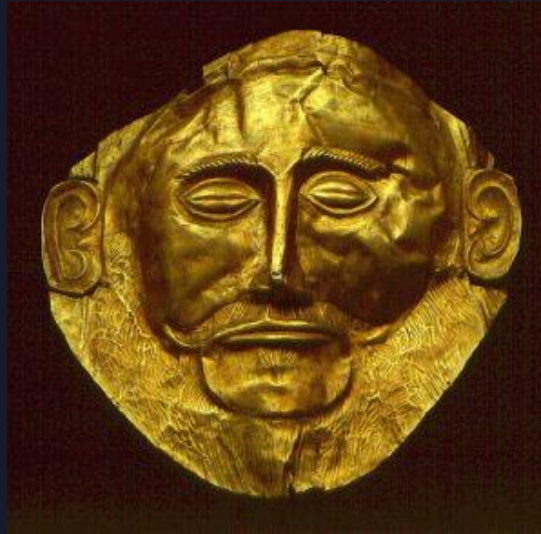


Stauffer-Allison collection

McPherson County



Metal



Fiber Objects (textiles, baskets, mats, etc.)

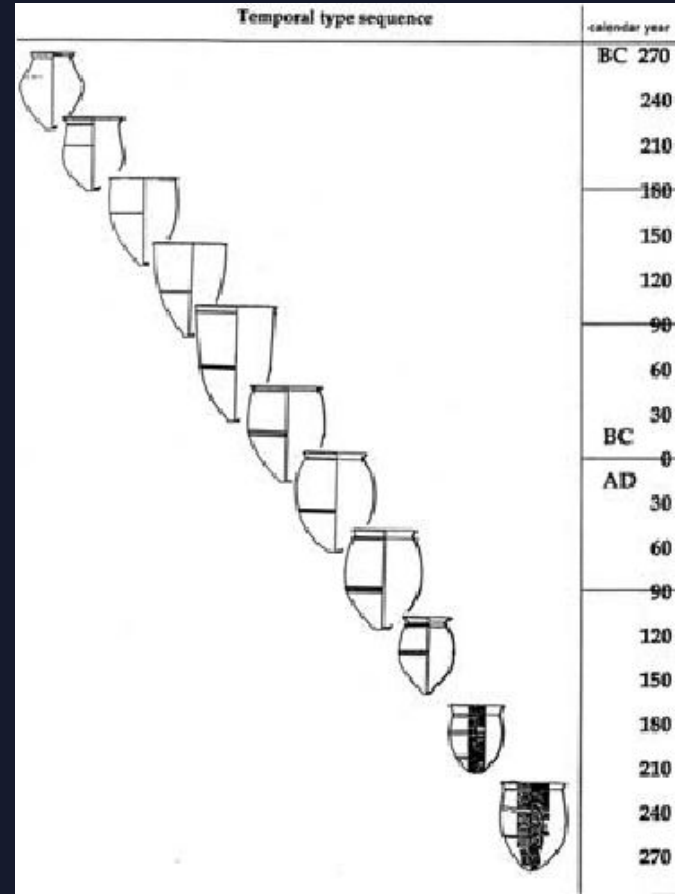


<https://www.metmuseum.org/art/collection/search/313152>

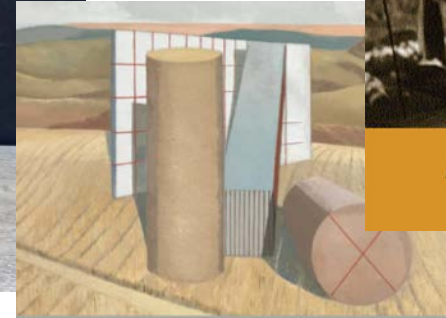
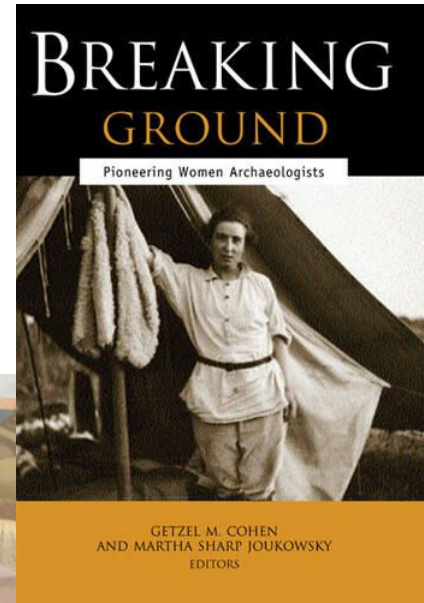
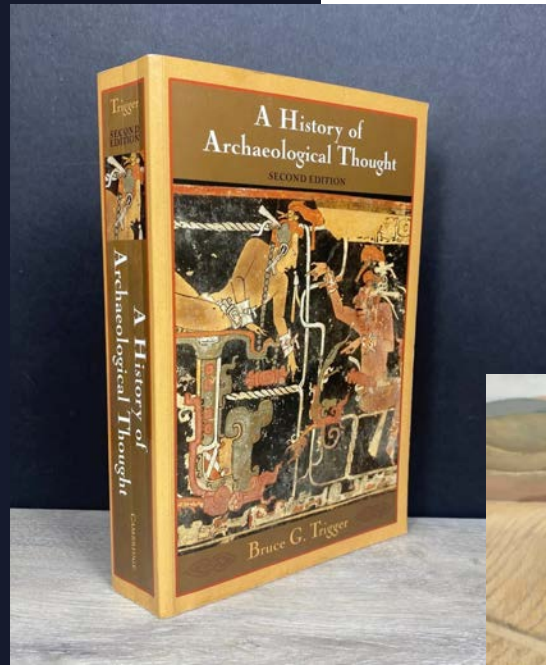


Time & Space

- **Typologies/ Chrono-Typologies**
 - Formal (morphology/shape)
 - Functional (various approaches!)
- *Object typologies in your life???*



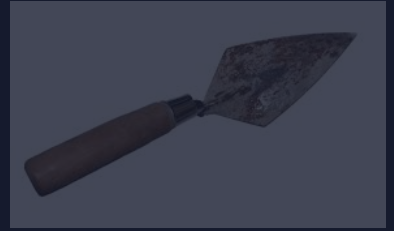
History of Archaeology



ARCHAEOLOGICAL
THEORY
AN INTRODUCTION
THIRD EDITION
MATTHEW JOHNSON

WILEY Blackwell

Periods/Eras/Phases of Development



- Roots of Archaeology: Antiquarians (17th/18th c.)
- Modern Archaeology: Culture History (mid 19th/1860s to mid 20th/to 1960)
- Archaeology Today...
 - “New” or Processual Archaeology (1960s to current)
 - Post-processual or Interpretivist Archaeology (1980s to current); also called Social Archaeology

Antiquarians (17th/18th c.)

Context

- Archbishop Ussher (1650)- October 22, 4004 BC (young Earth!)
- “Grand Tours” of Europe & visiting important sites for the wealthy
- Wunderkammers/ Cabinets of curiosities (starting mid-16th c.)
- Origins of later museums

Archaeology

- Focus on collecting objects, not theory or research questions
- Early “excavations” of Pompeii (1730s and on)
- Jefferson’s excavations (1780s) as ahead of their time/methods

Antiquarianism & the Origins of Museums

- Tour of Ole Worm's (1588-1654) Cabinet of Curiosities in Copenhagen ([1 min video](#))
 - *Ole Worm Returns: An Iconic 17th century Curiosity Cabinet is Obsessively Recreated* ([Meier, Atlas Obscura, 2013](#))
- *Opening the Cabinet of Curiosities* at the Victoria & Albert Museum ([8 min video](#))
 - Links of slave ownership & early museums, 19th c. ; legacies today



Antiquarianism & early Archaeology at Pompeii

- *Episode II: Excavating Pompeii* ([12 min video](#), 2017). Historian Justin Jacobs shares a history of the excavations at Pompeii and nearby sites, illustrating the early “quarrying” of archaeological sites to find objects to fill royal homes and later development of archaeological methods by Karl Weber (starting 1750).
- *Pompeii Quadriporticus Project* ([10 min video](#), 2016). UMass Amherst Classics Prof. Eric Poehler & ongoing, non-invasive digital archaeology project at Pompeii.
- *Pompeii Then & Now* ([8 min video](#), 2016). Illustrates the production of 3D models of the site based on standing architecture.
- *Pompeii Live From the British Museum* ([90 minute video from 2013 exhibit](#))

Antiquarianism

*“In the **17th and 18th centuries** , many middle- and upper-class people (mostly men, although not universally) began to develop an interest in the things past people made and used... The **antiquarian** fascination with exotic and ancient things – ancient and ethnographic artefacts as well as elements of the natural environment – underlies the **emergence of collecting institutions** and **material culture studies**, both foundational to archaeological practice” (Frieman 2023: 21)*

Culture History (1860-1960)

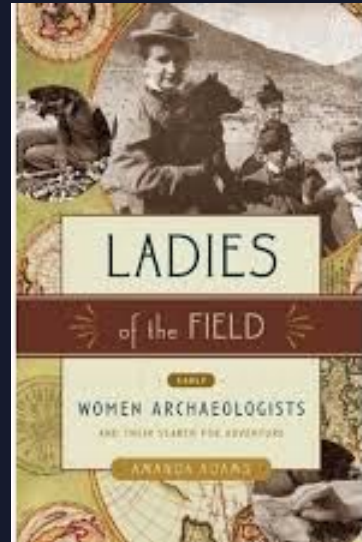
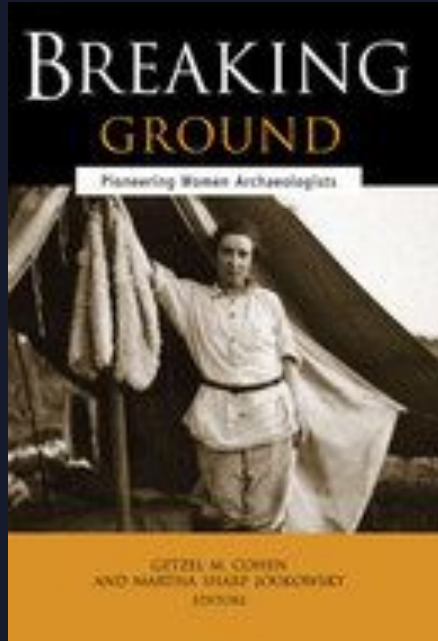
Context

- 1859 *Origin of the Species* published & discovery of tools w/extinct animals in France
- 1877 anthropologist LH Morgan's *Ancient Societies* & unidirectional cultural evolution [debunked!]
- Counter? Franz Boas' (1858-1942) historical particularism & cultural relativism [cultures as unique]

Archaeology

- Focus on documentation & description of archaeological cultures
- Shift to time/space dynamics
 - 1830s development of Three-Age System (stone, bronze & iron)
- Why did things change in the past? Migration or diffusion
- Systematic field techniques/geology

Victorian Archaeology: *Ladies of the Field*



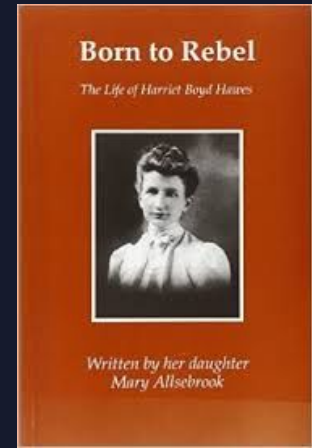
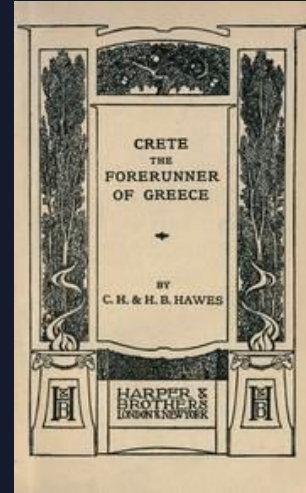
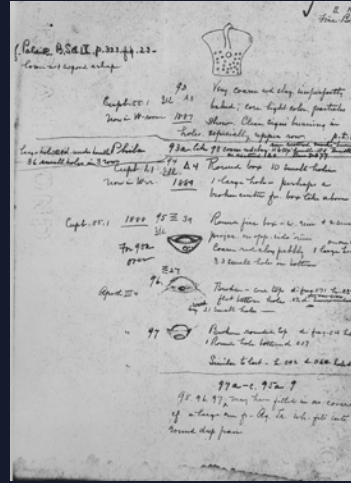
- Late 19th & early 20th c. women in archaeology
- Cultural backdrop: Victorian Era (1837-1901)
- Context: history of archaeology
- Goals: larger social relevance
- To consider: who is missing from this book?

Roots of Archaeology: European Expansion & Colonialism

“Edwards, Bell, Christie, and Garrod were British; Dieulafoy, French; and Nuttall and Boyd Hawes, American. It’s a Western team. Not one of the women presented here heralds from Asia or India, Africa or South America. **That is because archaeology was born of Western science. It moved with spreading colonialism** , was a tool of the British Empire, and fascinated the Western mind with its growing toolkit of physical evidence, theories, documentation, accurate measurements, hypothesizing, and overall propensity for logical explanation. This was a new way to interpret the past. The founders of archaeology were all of a Western European, and by extension, American mindset. **It would be some time before other parts of the world began to systematically excavate their own backyards for history’s buried remains”** (Adams 2010: 11-12).

• Papers @ Smith College

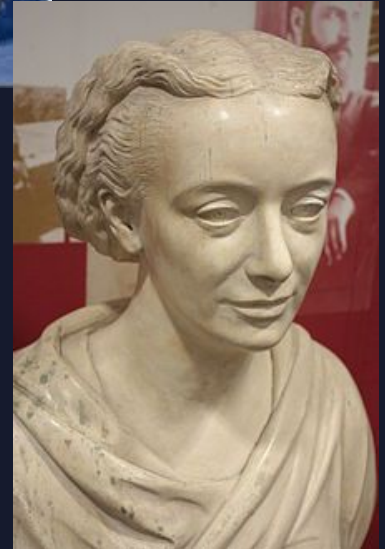
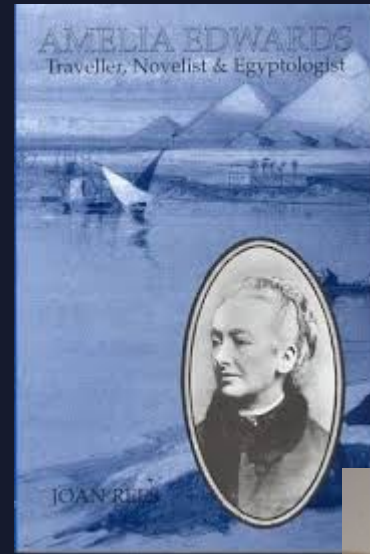
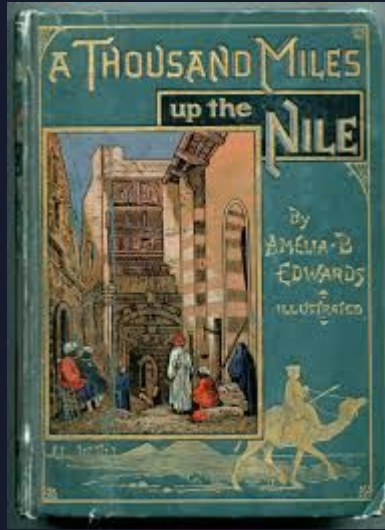
Harriet Boyd Hawes (1871-1945)



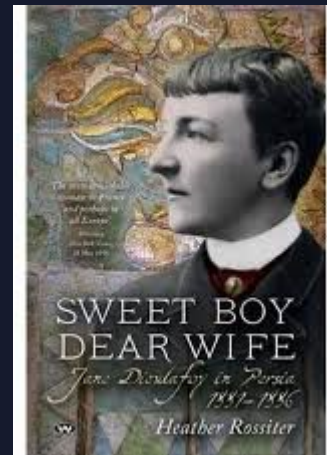
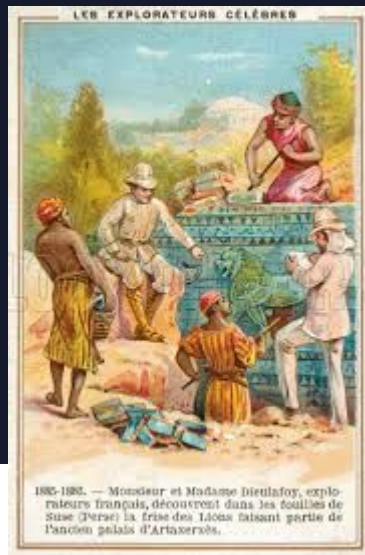
Amelia Edwards (1831-1892)



*Yours very sincerely
Amelia B. Edwards*



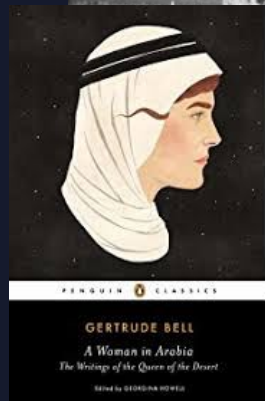
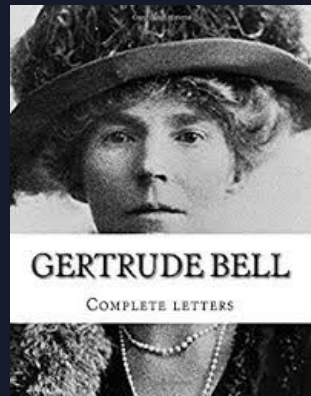
Jane Dieulafoy (1851-1916)



Zelia Nuttall (1857-1933)

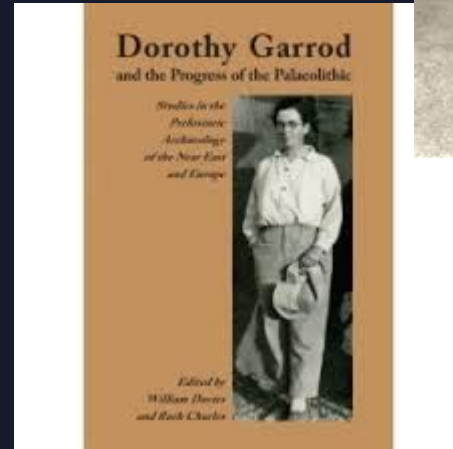


Gertrude Bell (1868-1926)



- [Gertrude Bell Archives/ Papers](#)
- [Gertrude Bell Comics/Archives](#)

Dorothy Garrod (1892-1968)

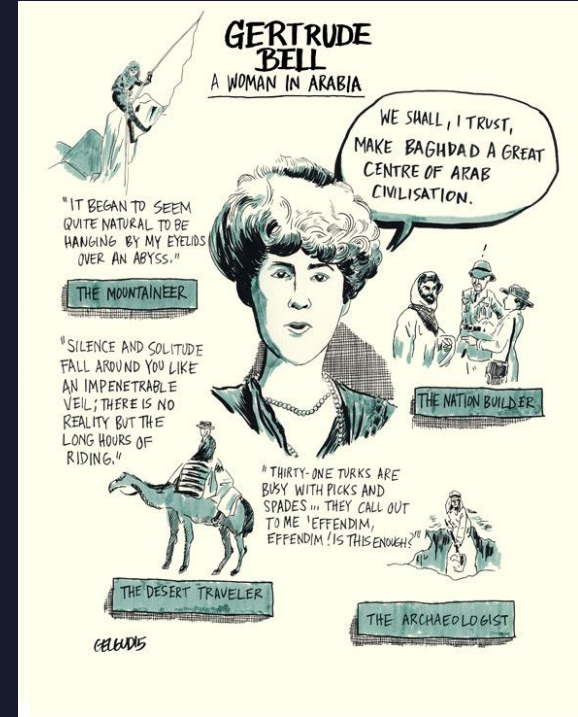


"Such is the fate of every Egyptian monument, great or small... The work of destruction goes on apace. There is no one to prevent it; there is no one to discourage it. Every day, more inscriptions are mutilated – more tombs are rifled – more paintings and sculptures are defaced."

Amelia B Edwards, 1877



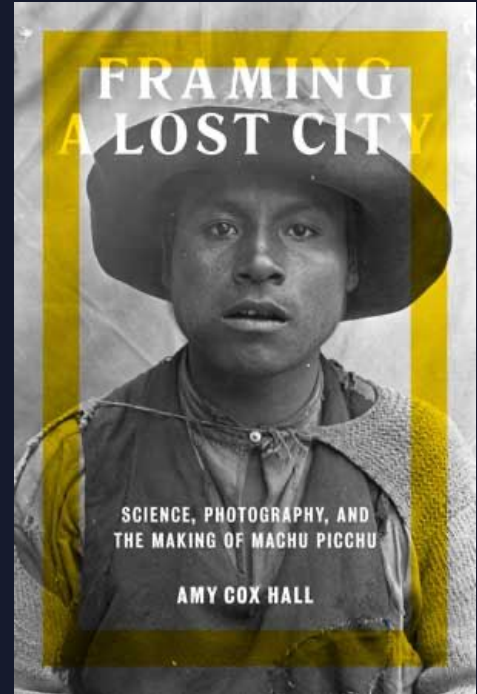
British archaeologist **Dorothy Annie Elizabeth ("Daisy") Garrod** (1892-1968) was the first woman to do research on Paleolithic humans and the first woman to hold a professorship at Cambridge University. #Groundbreaker



- [Breaking Ground: Pioneering Women Archaeologists](#) (Cohen & Joukowsky 2004)
- [Breaking Ground: Women in Old World Archaeology](#) (Brown University)
- [Trowelblazers Website](#)

Culture History & “Discovering” Machu Picchu (1911-1920)

- *Cradle of Gold: The Story of Hiram Bingham & MP* ([28 min video](#), 2011) [CW: human remains at 16-17 mins]
 - The nature of early fieldwork in remote areas, development of photography, role of National Geo in early archaeology, and the politics of the past.
- *History Pod: Machu Picchu Rediscovered by US Explorer Hiram Bingham* ([3 min video](#))



Culture-History

*“By the **middle of the 19th century** , we see the emergence of archaeology as a discipline, distinct from the (sometimes indiscriminate) collecting practices of individual antiquarians. However, in line with antiquarian interests, early archaeologists expended considerable effort to create structure in the disordered mess of the past. They did so by inventing methodologies to cluster material into coherent **geographical and chronological units** that could be studied as an assemblage”*
(Frieman, 21)

Archaeology Today...

*“While **19th- and early 20th century** excavations were aimed at finding (and often then stealing) valuable treasure from tombs or ancient cities, most **archaeologists today** find more value in broken bits of pottery, ratty stone tools, and old floor surfaces or foundations because these offer **insights into habitual practices and daily life**” (Frieman 2023: 2)*

Processualism/New Archaeology (1960-)

Context

- Post WW2- power of science & empiricism/objectivity
- Growth of cultural anthropology, “document” the world

Archaeology

- Focus on explanation (culture process), not just description
- Model building & hypothesis testing
- Universal explanations/laws for human behavior (e.g. why cities?)
- Focus on the material > social world (economics, environment, etc.)
- Radiocarbon dating & global chronologies for comparative work
- Multidisciplinary field & labwork

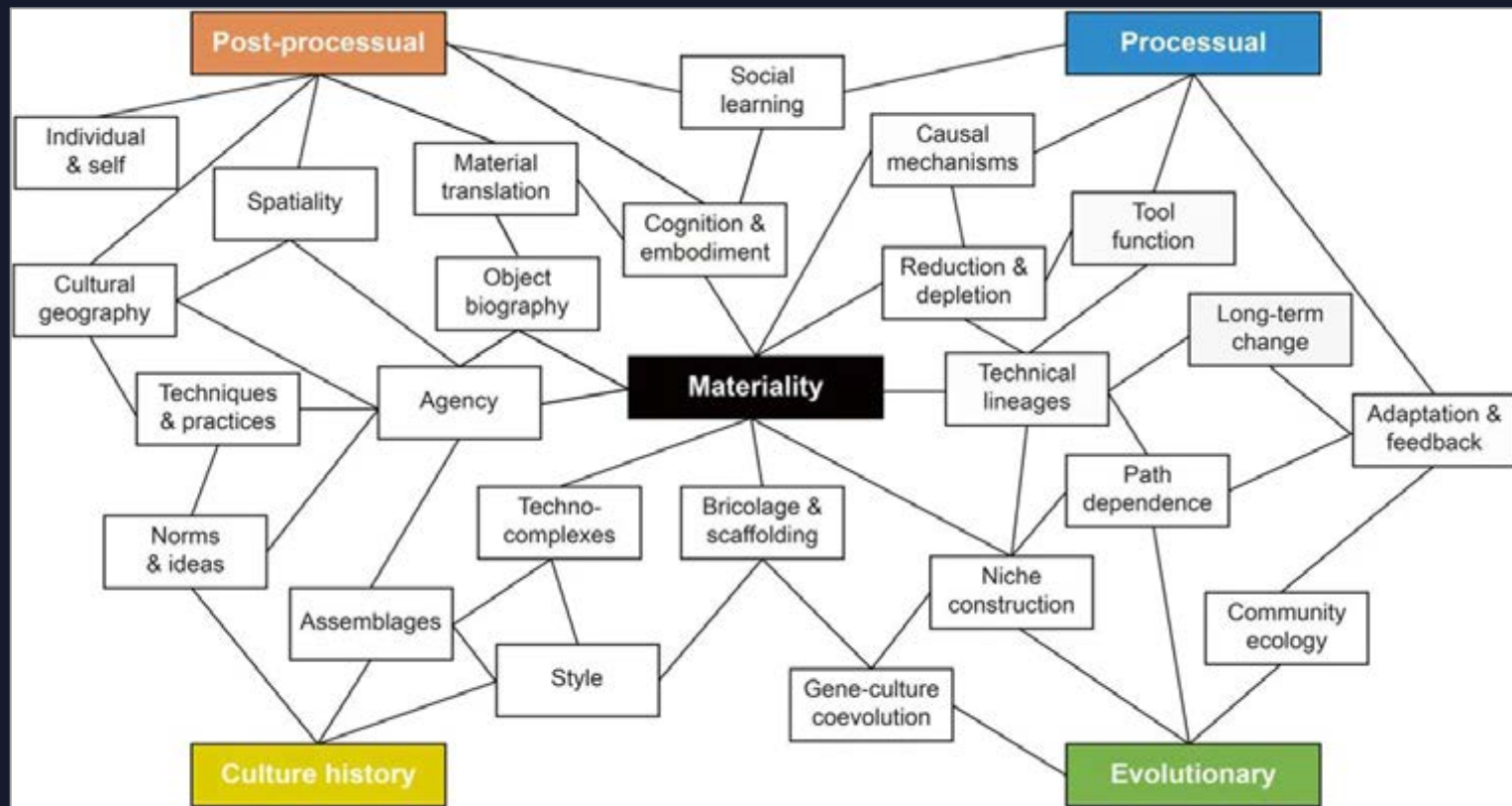
Post-Processualism/Interpretivism (1980-)

Context

- Postmodernism! (question everything... can we be “objective”?)
- Criticisms
 - Research bias (e.g. gender, race)
 - Other frameworks/ stakeholders
 - Can we talk about “laws” of human behavior?
 - Expanded research questions: ethnicity, gender, ritual

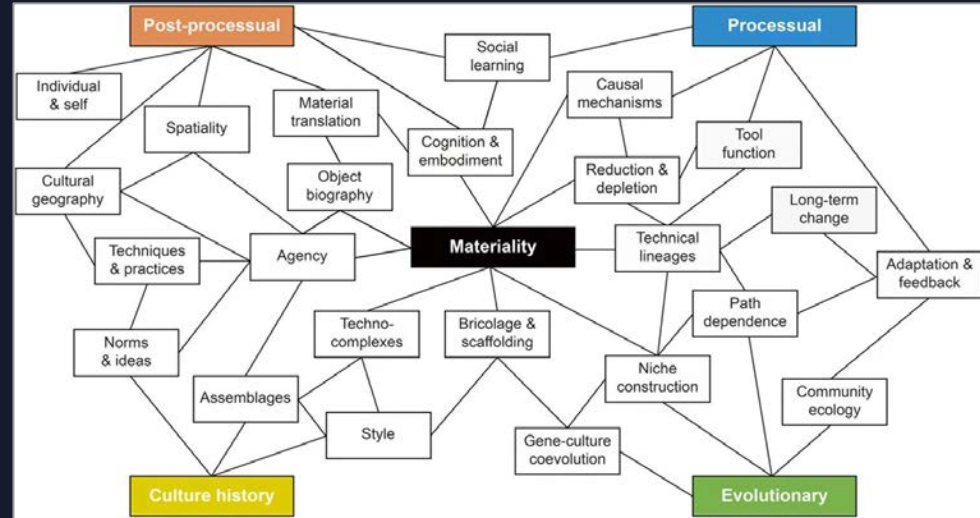
Archaeology

- Critique! & challenges to the objectivity of science (bias?)
- Shift from focus on the material world to ideas/ideology
- Neo-Marxism & social awareness (everything is political!)
- Focus on unique elements vs. “universal laws of human behavior”
- Today: many types of archaeology



History of Archaeology

- **Evolutionary models**
 - Change- one way, one direction
 - “Progress” & colonial biases
- **Culture history**
 - Change- via migration & diffusion
 - Archaeology & nationalism
- **New (or processual) archaeology**
 - “Multilinear explanations of change”
 - Science, computation, model building
- **Post-processual/”material turn”**
 - Entangled objects, relationships



Week 3

Archaeology's Roots

- General History
 - *Archaeology as History* (Int, 1, 2)
 - *Ladies of the Field* (Intro)
 - Trowelblazers Website
 - See [Resources](#) on website!
 - **Thursday! Harriet Boyd-Hawes & Victorian Archaeology**
-