

# Introduction to Archaeology

Fall 2024  
Lecture 10 (10/8)



# Week 6

## Editing & Special Collections

- Peer Review, GE Site Report
  - Visiting Special Collections
    - Harriet Boyd Hawes & Research Design at Gournia
-

**What is a Research Design???**

# Research Design (MATRIX project)

- **Formulation of Research**

- Define the research problem, background research, where, and what data needed

- **Implementation of research**

- \$, permits, team & equipment

- **Data acquisition**

- Reconnaissance, site survey & excavation

- **Processing (field lab)**

- Cleaning, cataloging, photos

- **Data analysis (lab)**

- Artifacts
- Chronology/dating
- Fauna & flora
- Geological analysis

- **Data Interpretation**

- Synthesis of analysis to answer original research question: reconstruct & explain

- **Publication**

- Data, data analysis, interpretation; various contexts

# Harriet Boyd Hawes



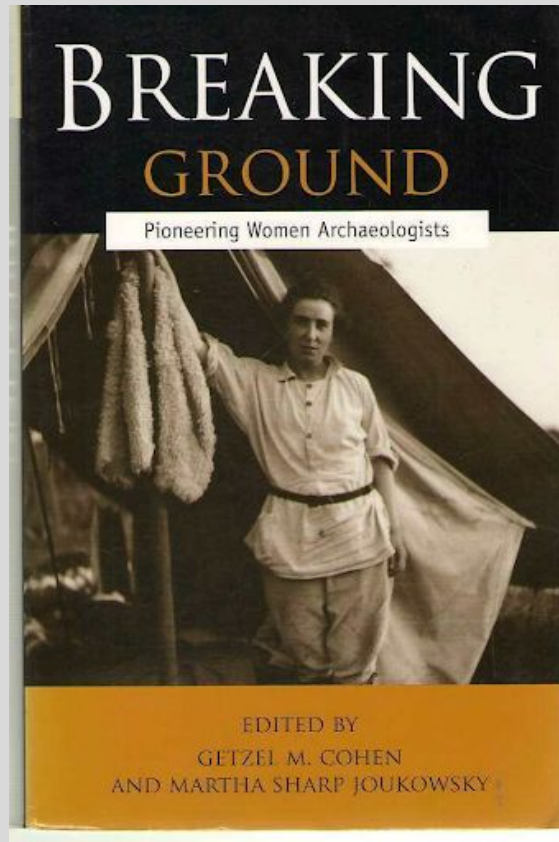
Or, What Does an Archaeologist Really Do?

Astrid Stephenson, '20, RA

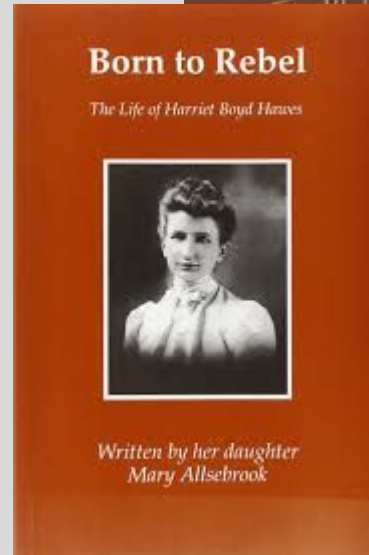
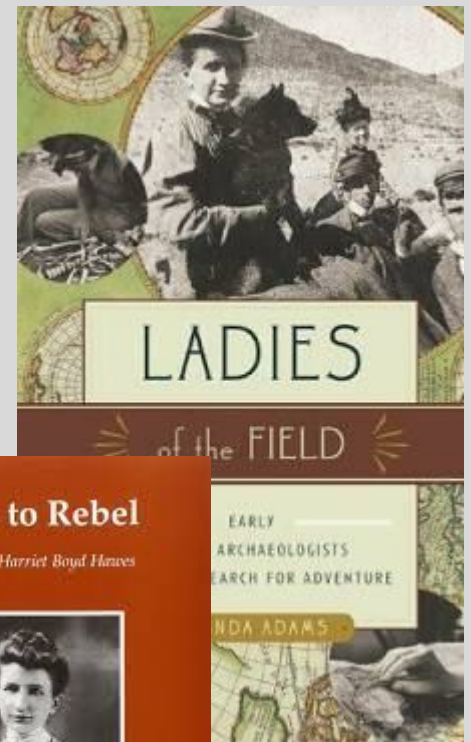
# Sources...



Smith Archive, 1904



<https://www.jstor.org/stable/10.3998/mpub.17654>



# Background

HBH  
lived  
here!



Washburn House, photo by Emily Derosier '16



Graduate Fellowships: The  
American School of  
Classical Studies at Athens

# Kavousi: Early Fieldwork on Crete

“...dug 3 pits - above polygonal wall which proves to be only terrace wall...lower terrace, dug 6 trial pits, many excellent fragments Islandware, pre-Mycenaean but no whole vases. **Is this settlement or what?** ...Lower terrace in about 2 cm... found 3 exotic lamps, fragments of lamps + terra cotta “icons” horsemen. Roman or Greek. A little discouraged.”

- Personal Journal, Kavousi, 5/14/1900



Workers at Kavousi, First Excavations 1900

# Gournia: First Visit

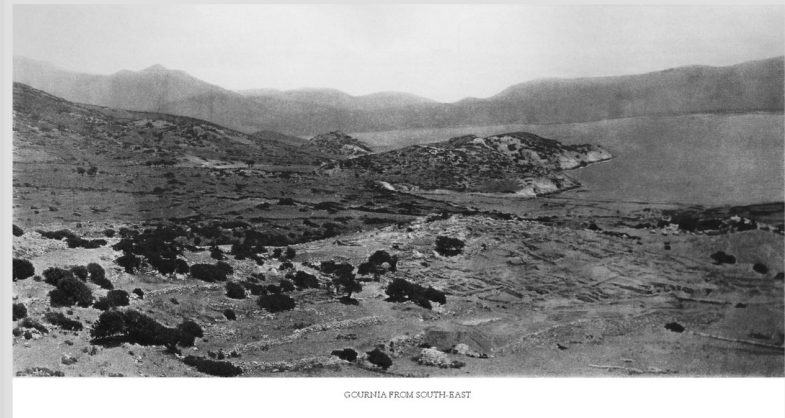
“On nearing a village, he [Papaddhias] would ride ahead, go to the inn, and order coffee for himself and any peasants who received him kindly. He would then question them about antiquities in the neighbourhood. By the time we arrived, an altogether exaggerated opinion of our importance had spread throughout the village, helped largely by the national Greek costume worn by Aristides [Pappadhias], which Cretans had seen, if at all, only in patriotic plays representing heroes of the Revolution of '21. Ladies attended by a man in this garb must be great indeed! **Soon sealstones, fragments of pottery and bronze would be brought to us quietly, and men would offer to show the fields where these had been unearthed** .”

- Boyd “Report 1901–1903” (Fotou and Brown 2004: 27, 28)

# Permission to Dig

“Large-scale excavations on a particular site required a **special permit**, as the general permit covered only trial or small-scale excavations on sites within a designated area. On May 15 Boyd petitioned for such a permit for Gournia. Hazzidakis, who had arrived the previous day and was pleased with the excavations, promptly supported Boyd’s petition. The permit, under the auspices of the **American Exploration Society**, was granted with the least possible delay on May 21.”

- Fotou and Brown 2004: 221, *Breaking Ground*

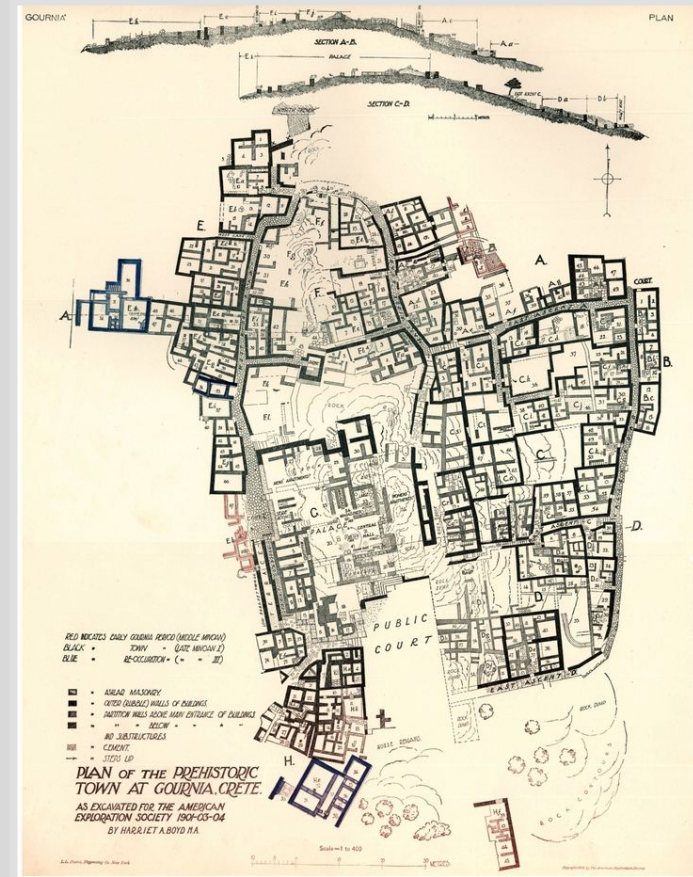


GOURNIA FROM SOUTH-EAST

# Excavations



A field journal in a trench at Gournia (SC Archives)



"Plan of the Prehistoric Town at Gournia, Crete"  
(Hawes 1908, 26)

# Excavations



“(L.M.I, c. 1600 - 1500 B.C.)

Rhyton (drinking vessel) in the shape of a bull's head, with hole of 2 cm diam. in top of head, midway between horns, and hole of 8 mm diam. in muzzle.”

- Hawes 1908: 62

“Crocus Rhyton (L.M.I, c. 1600 B.C.) Conical rhyton with hole at the bottom.”

- Hawes 1908: 66



# Excavations



“Three-handed *Bügelkanne* (“Stirrup jar”); practically complete (reconstructed from eighty-six pieces)...The vase is covered in a rich marine design, two writhing octopods in the midst of smaller sea-animals, executed in the finest island style.”

- Hawes 1908: 68

# Processing Finds: Onsite



Along with 50-100 workmen at a time, Boyd Hawes employed about a dozen “Sherd Girls” who worked on site to **wash and sort potsherds** and other artifacts as they came out of the ground.

- Smith College Archives

# Processing Finds: Offsite

“From November until mid-February... she wrote up the **financial and archaeological reports** of her 1903 excavations and prepared for her spring season.”

- Fotou and Brown 2004: 228, *Breaking Ground*



# Permanent Homes for Finds

Most of Boyd's finds were sent to the **Museum at Candia** as soon as their significance was realized (today the Heraklion Archaeological Museum)



Image: [travelcrete.tours](http://travelcrete.tours)

# Reports and Lectures

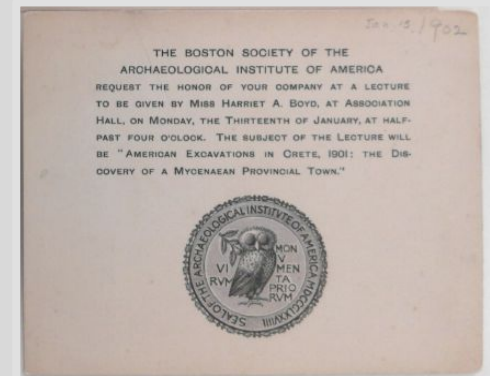
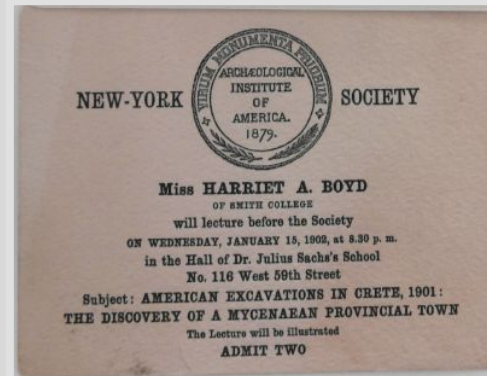
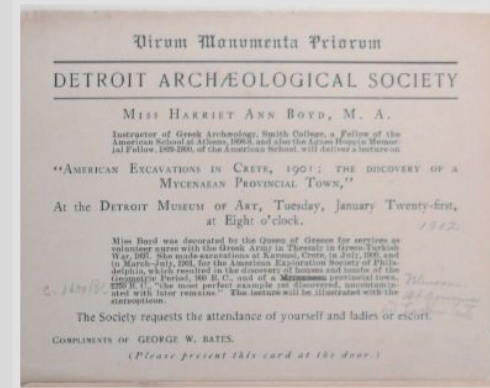
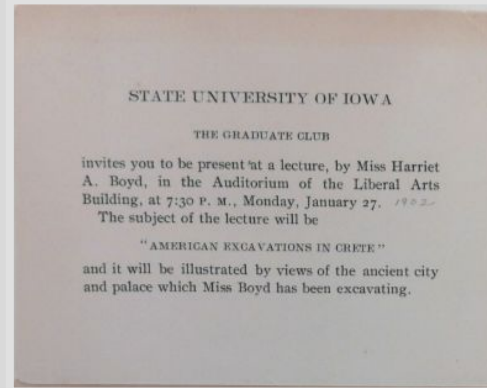
1902:

“For the first time in its history the executive council of the AIA recognized the work of a woman by inviting her to lecture in January before ten of its regional societies.” -

- Fotou and Brown 2004: 224

Full national tour, presenting “American Excavations in Crete, 1901: The Discovery of a Mycenaean Provincial Town” from Boston to Chicago in 10 days.

- Smith College Archives



# Writing/Publications

## Published:

- *Gournia*, 1905 (small site report)
- *Gournia, Vasiliki and other Prehistoric sites on the Isthmus of Hierapetra*, 1908 (large monograph)

## Seemingly Unpublished:

- *A Cretan Pompeii*, 1901
- *Five Riddles of Greek Art*, n.d.
- *Crete the Forerunner of Greece*, 1909, with Charles Henry Hawes



# HBH's Legacy...



## Fieldwork, etc.

- *Archaeology Magazine* (2015), [The Minoans of Crete](#), updates on excavations since 2010
- [Laurier University Blog](#) on recent excavations and public archaeology project at Gournia
- [HBH Fellowship](#) through AIA
- Visit the [Smith Archive](#) for materials
- [Resources at UPenn](#)

**Happy Birthday (October 11, 1871)!**

# (more) Research Design

## *Introducing Archaeology* (R. Muckle, Chapter 5)

1. Identifying the need for research
2. Doing background research
3. Generating research questions or hypotheses
4. Determining the types of data to collect
5. Determining what methods (field & lab) will produce those data sets
6. Logistics (permits, money, etc.)
7. Collecting data (fieldwork, labwork)
8. Making the data meaningful
9. Making the research meaningful

## **MATRIX project (W. Andrefsky)**

1. Formulation of research (define the question, background research)
2. Implementation of research (\$, permits, crew, equipment)
3. Data acquisition (survey, excavation)
4. Data processing (in field & field lab)
5. Data analysis (lab & specialists)
6. Data interpretation (synthesis!)
7. Publication of results (data, methods and interpretation)

# Week 6

## Editing & Special Collections

- 10/8 Peer Review
  - 10/10 Special Collections
  - 10/16 Google Earth Due
-